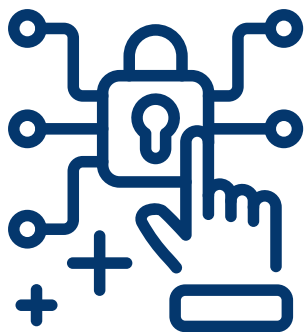


# Added Value for EELISA as an Associated Partner *Technical University of Moldova*



# Strategic and Geographic Contribution



**UTM's accession  
strengthens EELISA's  
footprint in Eastern  
Europe and the  
European Higher  
Education Area (EHEA).**



**The only technical  
university in  
Moldova.**



**Represents a bridge  
between the European  
Union and Eastern  
Partnership countries,  
contributing to EELISA's  
vision of extending its  
impact beyond EU  
borders.**



**This expansion  
enhances the Alliance's  
visibility, impact, and  
inclusiveness, creating  
new opportunities for  
cooperation in a key  
region.**

# Research and Innovation Capacities

*Together, these structures position UTM as a hub for applied research, technology transfer, and industry collaboration, offering EELISA partners complementary expertise and access to state-of-the-art infrastructure.*



**Cybercor Center**



**ZIPHouse Fashion  
Innovation Hub**



**Tekwill ICT  
Excellence Center**



**Veterinary Medical  
Center**



# Internationalization and Networks



*Active engagement in Horizon Europe, AUF, EUA, CASEE, DRC, and the Black Sea Universities Network.*

*Over 100 Erasmus+ KA1 mobility agreements and participation in 14 Erasmus+ KA2 projects, including coordination of 4.*

*Existing collaboration with EELISA members, such as Universitatea Politehnica din București, in joint projects, double degrees, and staff/student exchanges.*

***This strong internationalization ensures smooth integration into the EELISA ecosystem and immediate contribution to ongoing initiatives.***

# Concrete Contributions to EELISA



**Education & Mobility:** participation in BIPs, micro-credentials, lifelong learning, and recognition mechanisms

**Joint Degrees:** involvement in the design of Erasmus Mundus and Executive Master programs (e.g., Digital Twins for Infrastructure)

**Communities:** engagement of at least 20 UTM students annually in EELISA communities, with digital credentials

**Research:** visibility of UTM researchers and labs in the EELISA Research Catalogue; participation in joint PhD/Postdoc workshops and co-publications.

**Career Development:** access for UTM students to the EELISA Career Portal, internships, and International Career Days.

**Staff and Students Engagement:** structured connection between UTM's Student Council and the EELISA Student Council; staff training and job shadowing opportunities

# INSTITUTIONAL COMMITMENT

**UTM is prepared to contribute up to €10,000 annually to EELISA's joint resources, ensuring sustainability of its involvement.**

*This financial contribution, combined with dedicated institutional structures (International Relations Directorate, Erasmus+ Center, International Student Office), demonstrates UTM's strong commitment to governance and to the Alliance's long-term goals.*

# Conclusion



*By joining EELISA, UTM enriches the Alliance with new scientific domains, advanced infrastructure, geographic extension, and tested international cooperation mechanisms.*

***UTM offers EELISA a unique combination of strategic positioning, interdisciplinary programs in veterinary medicine and life sciences, cutting-edge research centers (Tekwill, Cybercor, ZIPHouse, Veterinary Medical Center), three established research institutes, and extensive EU project experience.***

*Its integration will not only consolidate EELISA's role as a pioneering European University Alliance but will also contribute to shaping a truly inclusive and impactful European Higher Education and Research Area*

# THANK YOU!

*Technical University of Moldova*  
*Inspiring Minds. Building the Future.*



Together for a Connected, Inclusive  
and Sustainable Europe